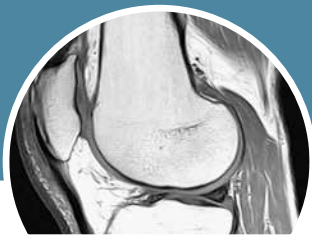


Pre-authorization



We offer you and your patients pre-authorizations provided by our team of dedicated insurance specialists. We will facilitate authorizations for the following major insurance companies, as well as some that may not be listed below.

Call **855.247.0318** if you have questions about a plan not listed.

CDI may obtain pre-authorization

- Aetna Health
- AllWays Health Partners
- Blue Cross/Blue Shield
- BMC HealthNet Plan
- BMC HealthNet Plan Mercy Alliance
- BMC HealthNet Plan Community Alliance
- Cigna
- Commonwealth Care Alliance
- Fallon Commercial Health
- Harvard Pilgrim Health Care
- Health New England
- MultiPlan
- Network Health
- Private Healthcare Systems
- Tufts Health Plan
- UniCare Life and Health Insurance Company
- UnitedHealthcare

Provider must obtain

- CCMSI
- GENEX Services
- Med-Eval
- Medfocus Radiology Network
- One Call Medical
- Primex
- Raytel Imaging Network
- US Imaging Network

As of June 2019

↓ Include the following with your faxed or online (insideCDI.com) order:

1

INSURANCE NAME AND ID/POLICY NUMBER

This helps us quickly contact the correct insurance plan and obtain a timely authorization for your patient's exam.

2

CURRENT CLINICAL CHART NOTES

Having chart notes available to submit with the request for authorization helps speed the process along. Providing the information below by fax, phone or secure email will help expedite pre-authorization:

- Current signs and physical exam findings
- Specific injury or trauma (if applicable)
- Any past diagnostic imaging related to the body part being imaged (reports and images)
- Physical therapy and how long (if applicable)
- Any medications the patient is taking
- What is the provider looking for or trying to rule out with the requested study?

3

DIAGNOSIS

An ICD-10 diagnosis code is preferred by most insurance companies, if available. A general diagnosis, such as knee pain or other symptoms, or a rule out, is useful if the ICD-10 is not available.

We specialize in answers.



DIAGNOSTIC IMAGING®

In-network payers

Thank you for allowing us to serve you and your patients. Contact us if you don't see a contracted health plan you are looking for.

- Aetna Health
- AllWays Health Partners
- Blue Cross/Blue Shield
- BMC HealthNet Plan
- BMC HealthNet Plan Mercy Alliance
- BMC HealthNet Plan Community Alliance
- CCMSI
- Cigna
- Commonwealth Care Alliance
- Fallon Commercial Health
- GENEX Services
- Harvard Pilgrim Health Care
- Health New England
- MassHealth
- Medfocus Radiology Network
- MultiPlan
- Network Health
- One Call Medical
- Private Healthcare Systems
- Raytel Imaging Network
- Tufts Health Plan
- UniCare Life and Health Insurance Company
- UnitedHealthcare
- US Imaging Network
- Wellforce Medicaid

As of June 2019

Note that authorizations will only be provided when permitted by the patient's payer. Some payers may require additional information.



Talk to a CDI insurance specialist at 855.247.0318.

CHELMSFORD
187 Billerica Rd.
Chelmsford, MA 01824
fax 978.256.9536

DEDHAM
200 Providence Hwy.
Suite 210
Dedham, MA 02026
fax 781.329.1713

HAVERHILL
One Park Way
Haverhill, MA 01830
fax 978.469.0408

SPRINGFIELD
3640 Main St.
Suite 101
Springfield, MA 01107
fax 413.781.7988

WOBURN
800 West Cummings Park
Suite 1150
Woburn, MA 01801
fax 781.932.8619

myCDI.com

